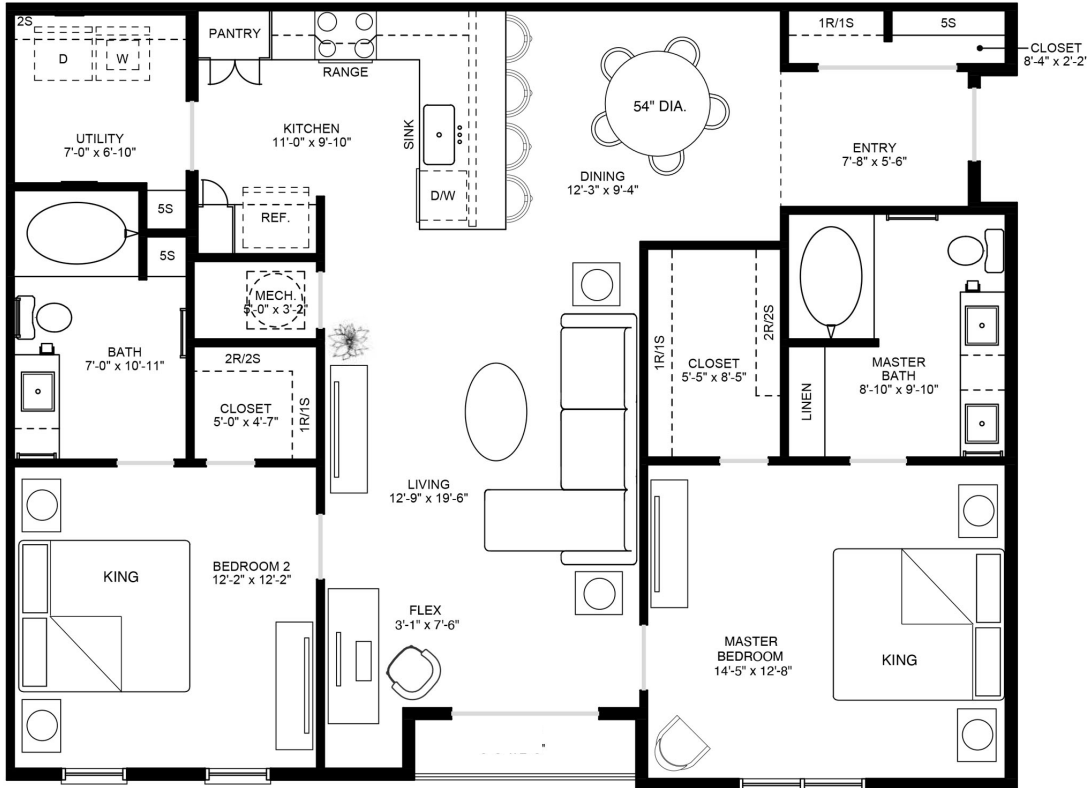


# 2 BEDROOM / 2 BATH

2nd and 3rd Floor



**Bedrooms** 2  
**Bathrooms** 2  
**Sq.Ft.** Living: 1,209

\$ \_\_\_\_\_

Notes \_\_\_\_\_

**Apply Now:**

[parkplacetownship.com](http://parkplacetownship.com)

**615.605.5058**

[leasing@parkplacetownship.com](mailto:leasing@parkplacetownship.com)



We are pledged to the letter and spirit of U.S. Policy for the achievement of equal housing opportunity throughout the Nation. We encourage and support an affirmative advertising and marketing program to obtaining housing because of race, color, religion, sex, sexual orientation, disability, familial status, or national origin. Developer reserves the right to make or adjust specifications without notice. All renderings, floor plans, features and photography are artist's depictions only. Features, pricing and dimensions shown herein are subject to change without notice. All dimensions are approximate. Oral and e-mail representations cannot be relied upon as accurately stating the representations of the Developer.